

**Minutes of Rocglen Coal Mine**  
**Community Consultative Committee – Meeting #41**

**Meeting Held:** Wednesday 16<sup>th</sup> April 2025

**Venue:** Gunnedah Whitehaven Office (Mooki room)

**Commencement Time:** 14:45

**Present:**

John Sturgess (JS) – Independent Chairperson

Olivia Hulbert (OH) – Environmental Advisor

Daryl Robinson (DR) - Manager (Environmental & Mine Rehabilitation)

Alison Quiroz – Environmental Officer

**Apologies:**

Pam Burns (PB) – Community Representative

Darren Swain (DS) - General Manager Community Engagement

Colleen Fuller (CF) - Community Representative

Wade Hudson (WH) – GSC Representative

**Previous Minutes**

Minutes accepted as true record of the motion. Accepted by Olivia and Daryl.

**Site Update**

DR - minor seeding work & compound fencing has been set up around the workshop

JS – who is using the workshop currently

DR – no one permanently

DR – activities on site will be limited to rehab monitoring and maintenance

**Review of Environmental performance** – Presented by OH (no comments)

**Meeting closed:** 15:00

# Rocglen Coal Mine

## Community Consultative Committee

### Meeting #41

Environmental Monitoring Report  
January 2024 – December 2024

### Site Monitoring

**1. Noise Monitoring**

Attended noise monitoring is no longer required for the site. There were no noise complaints or investigations

**2. Blast Monitoring**

Blasting at the operations has ceased and blast monitors have been decommissioned.

**3. Air Quality**

**3.1. Deposited Dust Results**

The deposited dust monitoring had mean values below the set criteria at all sites.

*Table 1: Deposited Dust Monitoring Data Summary January 2024 – December 2024*

Site	EPL I.D. No.	Property Name	2024 Annual Mean Total Insoluble Solids (g/m2/month)	Mean Ash
BD3		Belah	1.1	60.29%
BD4	4	Surrey	1.4	54.76%
BD5		Stratford	1.7	49.76%
BD6	6	Roseberry	0.7	62.65%
BD7		Roseglass	1.2	47.26%
BD8		Yarrowonga	0.7	56.82%
BD2-A		Penryn	1.7	41.06%

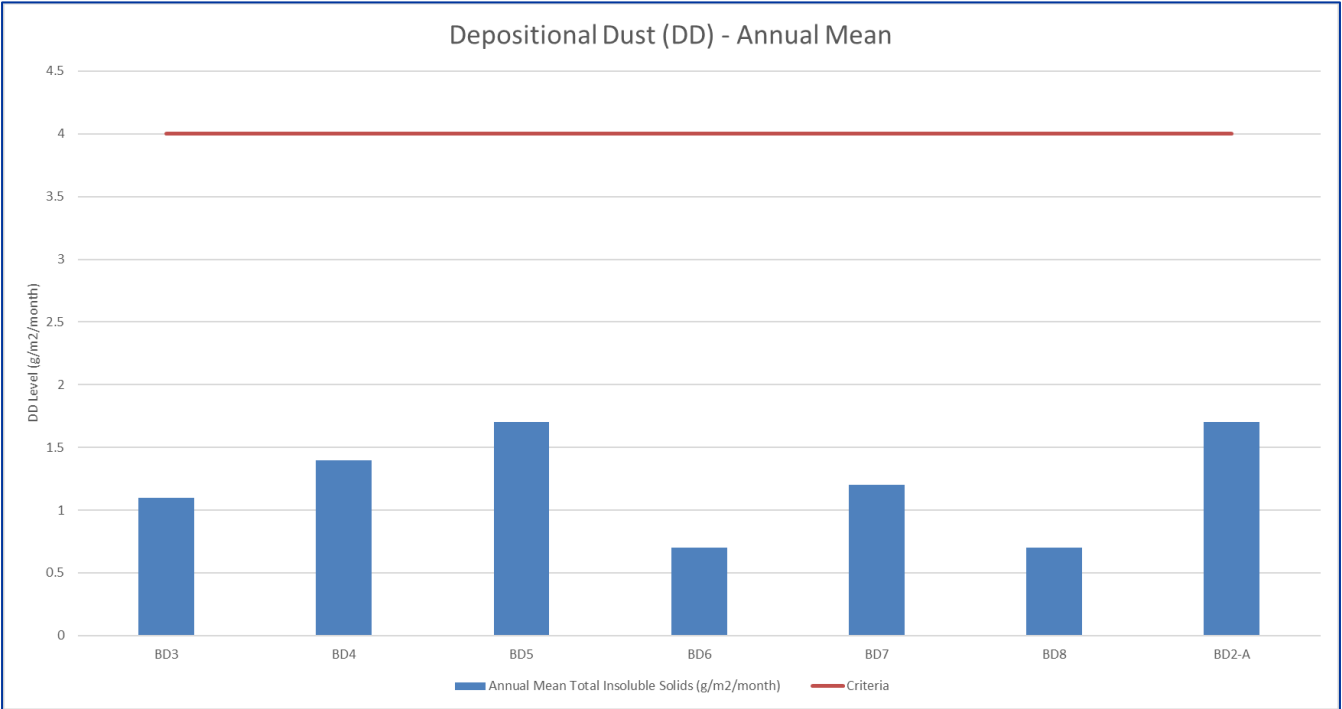


Figure 1 - Annual Average of Depositional Dust across 7 monitoring sites.

3.2. **PM10 Results**

There were no PM10 exceedances within the reporting period.

Table 2: Summary High Volume air sampler (HVAS) at Roseberry (2024 Calendar Year)

Sites	Roseberry
No. of readings	61
No. days above criteria	0
Maximum	29.5
Minimum	1.4
Average	8.9

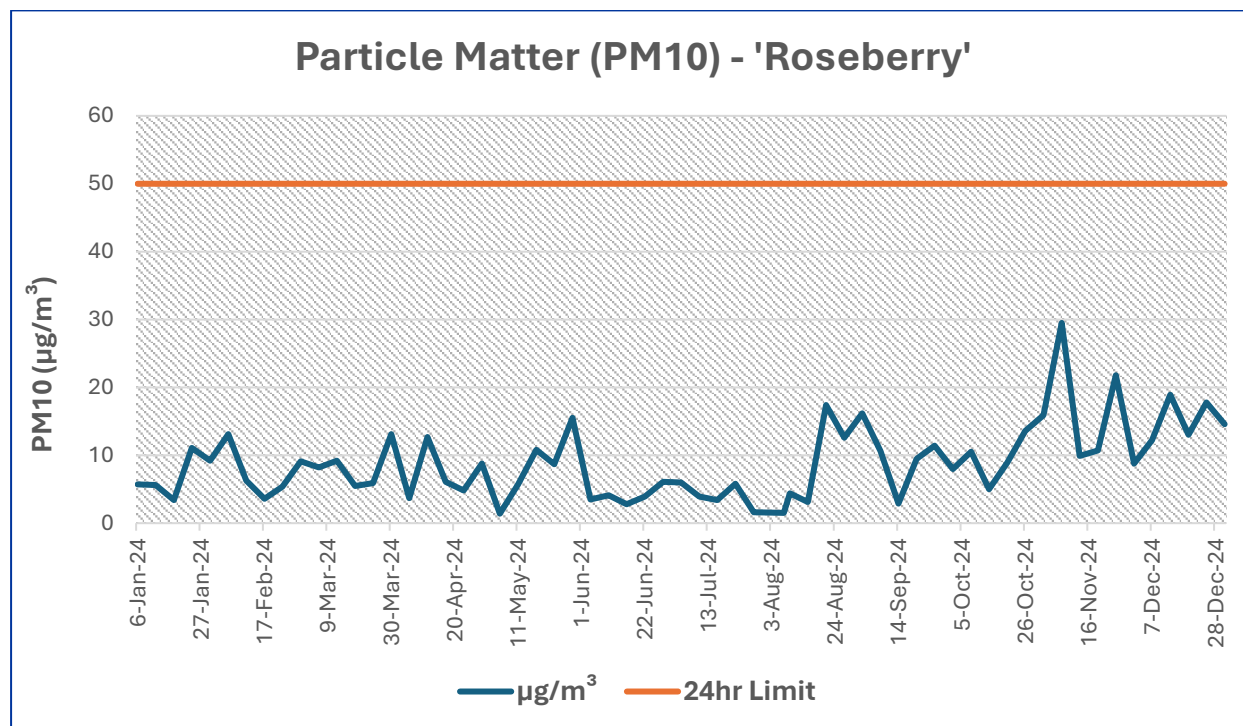


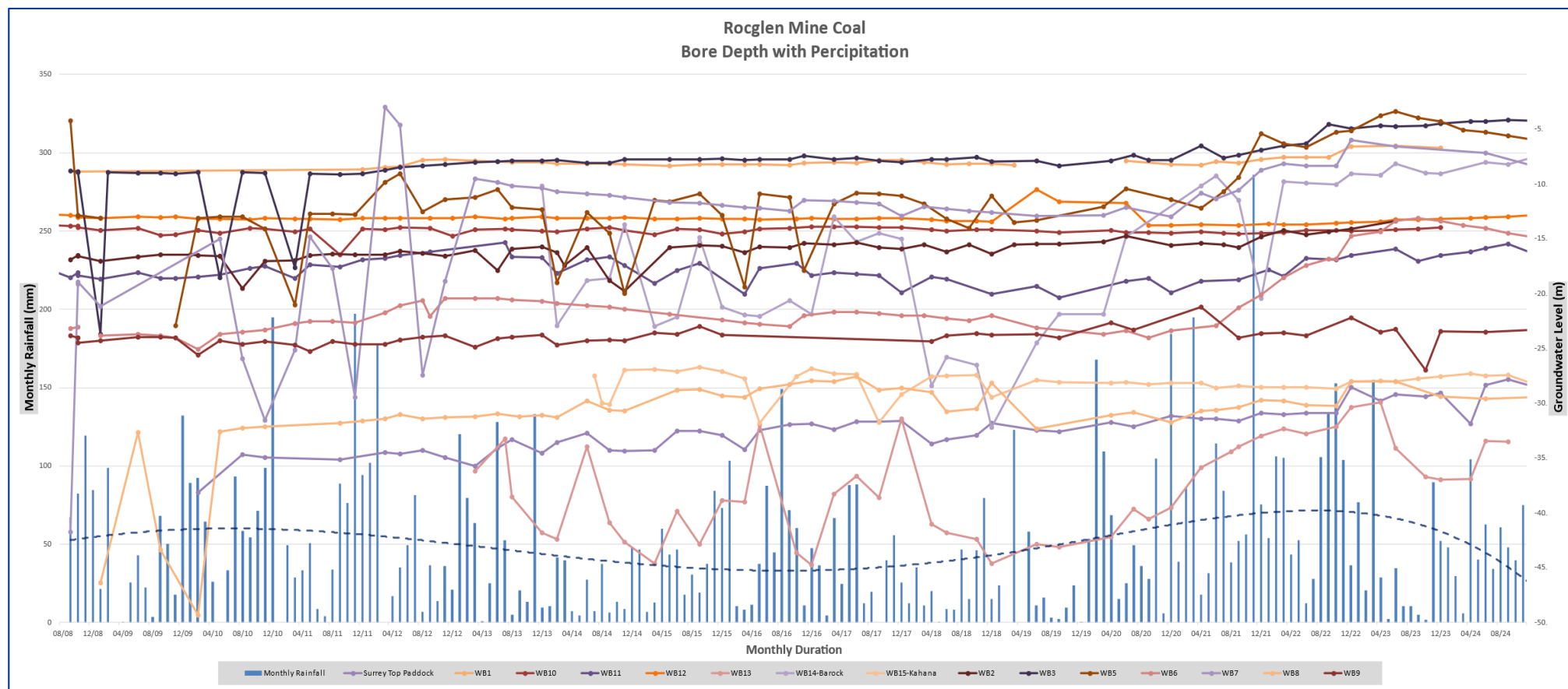
Figure 2 - 'Roseberry' Particulate Matter (PM10)

## Water Monitoring

### 4. Groundwater

Monitoring piezometer water levels remained stable throughout the reporting period. Water levels at MP7 & MP8 are related to isolated perched aquifer adjoining the mine void. Two water bores around site have shown level increases during the reporting period with groundwater levels at WB13 rising by 3.43m, and Surrey Top Paddock by 3.44m. Water level in all other sites trend in accordance with rainfall.

The mine void was backfilled in December 2020 above groundwater inflow level. There was no bore water extraction or groundwater take from void seepage during the reporting period.



*Figure 3 – Rocglen Mine Groundwater Production Bore Depth*

## 5. Surface Water

There are two Licenced Discharge Points (LDPs) nominated in the current EPL 12870, LDP11 to the south of the site, and LDP12 to the north of the site.

- Wet weather discharge is where more than 38.4mm of rainfall occurs within 5-day period.
- Controlled Release is where water dams at discharge points are full and actively pumped off site after quality requirements are met. Flocculation of the dams is undertaken where required remove sediment load.

### Wet Weather Discharges during reporting period (2024 Calendar Year)

There were three (3) uncontrolled wet weather discharges from Dam SD3 through licenced discharge point LDP11 on June 1st 2024; August 6th 2024; and December 2nd 2024 with respective rainfall totals of 51mm, 43.2mm and 57.4mm for the preceding 5 days. All results met EPL criteria.

### Controlled Releases during the reporting period (2024 Calendar Year)

There were zero controlled releases during this reporting period.

## Complaints

No community complaints have been received since last CCC meeting.

## Rehabilitation

13,560 seedlings were planted across both the Northern and Western emplacement as well as the Western Void.

Area	Hiko Seedlings planted
Year 2021	
Northern Dump	1,434
Eastern Void	1,894
Southern Void	987
Year 2022	
Northern Dump	1,300
Eastern Void	8,594
Southern & Western Void	470
Year 2023	
Western Void	2,240
Northern Emplacement	838
Western Emplacement	7,770
Year 2024	
Western Void	3,560
Northern Emplacement	4,320
Western Emplacement	5,780